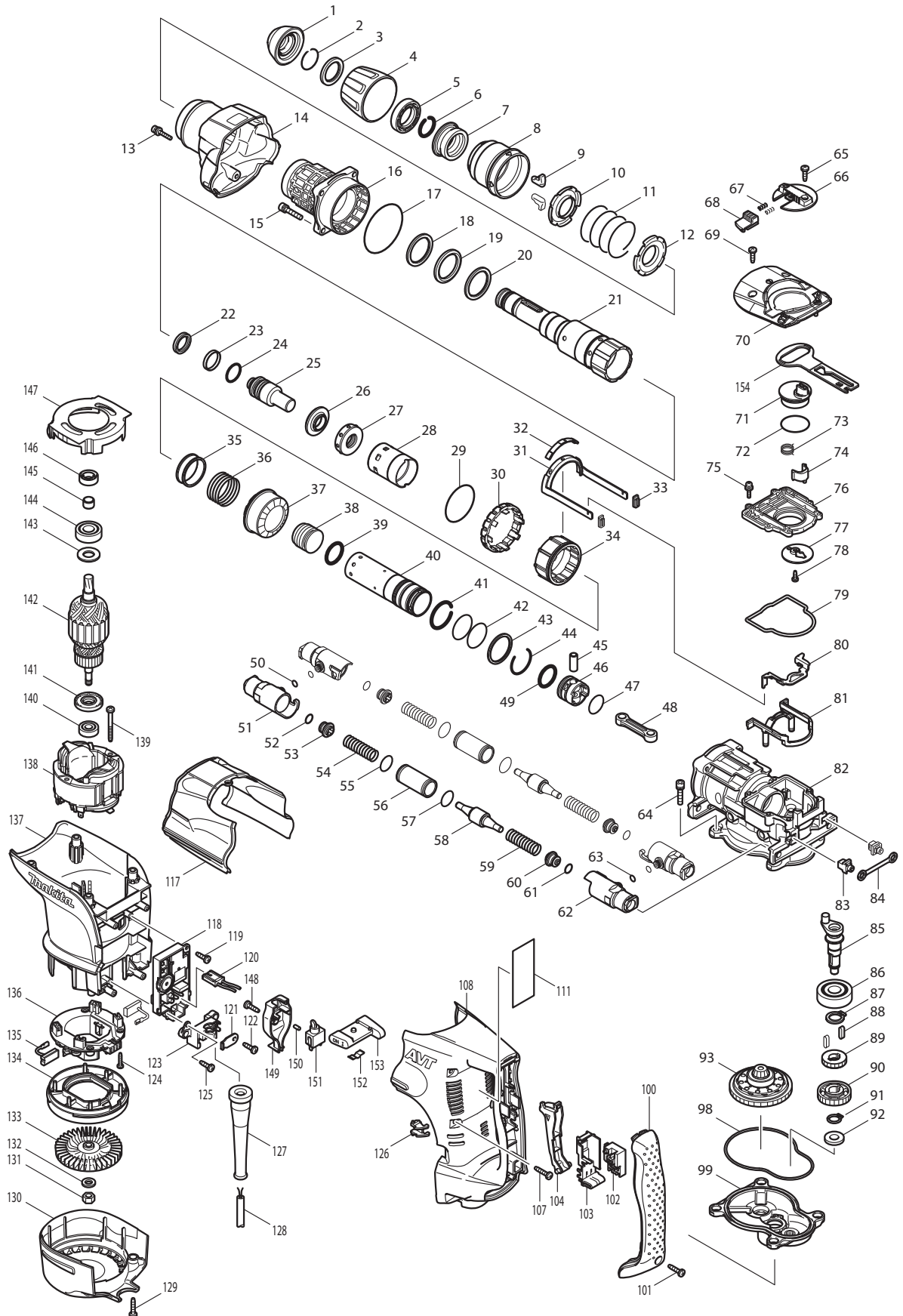




12 - 2009
HR4510C
SDS-MAX 1-3/4" ROTARY HAMMER



Item No.	Type Sub	Part No.	Description	Qty	Unit
1	2	286285-4	* TOOL HOLDER CAP	1	PC.
2		233948-3	RING SPRING 25	1	PC.
3		257280-1	RING 28	1	PC.
4		450064-8	CHUCK COVER	1	PC.
5		419002-9	SPACER	1	PC.
6		233948-3	RING SPRING 25	1	PC.
7		324752-2	CHUCK RING	1	PC.
8		450030-5	RELEASE COVER	1	PC.
9		310178-4	TOOL RETAINER	2	PC.
10		345804-6	SPRING GUIDE	1	PC.
11		233496-2	COMPRESSION SPRING 49	1	PC.
12		345804-6	SPRING GUIDE	1	PC.
13		922148-7	HEX. SOCKET HEAD BOLT M4X25	1	PC.
14		158300-3	BARREL COVER COMPLETE	1	PC.
15		922353-6	HEX.SOCKET HEAD BOLT M6X30	4	PC.
16		158576-2	BARREL COMPLETE	1	PC.
	INC.	213480-3	OIL SEAL 35	1	PC.
	INC.	214507-2	PLANE BEARING 36	1	PC.
	INC.	214601-0	PLANE BEARING 48	1	PC.
	INC.	233964-5	RING SPRING 50	1	PC.
	INC.	213604-1	O RING 50 (Added)	1	PC.
17		213754-2	O RING 71	1	PC.
18		267357-4	FLAT WASHER 36	1	PC.
19		262135-7	RUBBER RING 36	1	PC.
20		267357-4	FLAT WASHER 36	1	PC.
21		324872-2	TOOL HOLDER	1	PC.
22		213980-3	X-RING 21	1	PC.
23		213431-6	FLUORIDE RING 28	1	PC.
24		213394-6	O RING 23	1	PC.
25		324802-3	IMPACT BOLT	1	PC.
26		324805-7	RING 19	1	PC.
27		424032-7	RUBBER RING 20	1	PC.
28		450024-0	SLIDE SLEEVE	1	PC.
29		213656-2	O RING 53	1	PC.
30		450031-3	LOCK SLEEVE	1	PC.
31		165465-4	LINK ARM	1	PC.
32		450032-1	LINK ARM GUIDE	1	PC.
33		424024-6	SEAL PLATE	2	PC.
34		324800-7	DRIVING SLEEVE	1	PC.
35		331599-7	RING 38	1	PC.
36		234024-6	COMPRESSION SPRING 39	1	PC.
37		227526-9	STRAIGHT BEVEL GEAR 35	1	PC.
38		324804-9	STRIKER	1	PC.
39		213981-1	O-RING 27	1	PC.
40		324803-1	CYLINDER 34	1	PC.
41		233956-4	RING SPRING 37	1	PC.
42		213460-9	O RING 35	2	PC.
43		257283-5	RING 38	1	PC.
44		233955-6	RING SPRING 36	1	PC.
45		331598-9	PIPE 10	1	PC.
46		450025-8	PISTON	1	PC.
47		213407-3	O RING 26	1	PC.
48		450026-6	CONECTING ROD	1	PC.
49		213981-1	O-RING 27	1	PC.
50		213030-4	O RING 8	2	PC.
51		318169-9	PIPE HOLDER	2	PC.
52		213118-0	O RING 12	2	PC.
53		450027-4	SPRING GUIDE	2	PC.
54		234023-8	COMPRESSION SPRING 14	2	PC.
55		213373-4	O RING 22	2	PC.
56		331778-7	PIPE 20	2	PC.
57		213373-4	O RING 22	2	PC.

Item No.	Type Sub	Part No.	Description	Qty	Unit
58		324806-5	* COUNTER WEIGHT	2	PC.
59		234023-8	COMPRESSION SPRING 14	2	PC.
60		450027-4	SPRING GUIDE	2	PC.
61		213118-0	O RING 12	2	PC.
62		318169-9	PIPE HOLDER	2	PC.
63		213030-4	O RING 8	2	PC.
64		922353-6	HEX.SOCKET HEAD BOLT M6X30	4	PC.
65		266192-7	TAPPING SCREW 4X14	1	PC.
66		419020-7	CHANGE LEVER	1	PC.
67		233436-0	COMPRESSION SPRING 3	2	PC.
68		419009-5	LOCK BUTTON	1	PC.
69		266192-7	TAPPING SCREW 4X14	2	PC.
70		318171-2	CRANK CAP COVER	1	PC.
71	1	419784-3	* CRANK LEVER	1	PC.
	2	450687-2	* CRANK LEVER	1	PC.
72	3	213687-1	O RING 36	1	PC.
	4	213534-6	O RING 36	1	PC.
73		233506-5	TORSION SPRING 16	1	PC.
74		310207-3	LINK LEVER	1	PC.
75		911133-5	PAN HEAD SCREW M4X18	6	PC.
76	1	450034-7	* CRANK CAP	1	PC.
	2	455525-3	* CRANK CAP	1	PC.
77		345778-1	RETAINER PLATE	1	PC.
78	1	266020-6	* TAPPING SCREW 4X12	1	PC.
	2	265014-8	* + PAN HEAD SCREW M4X12	1	PC.
79		424034-3	SEAL RING	1	PC.
80		345822-4	LINK PLATE	1	PC.
81		450029-0	LINK PLATE GUIDE	1	PC.
82		158297-6	CRANK HOUSING COMPLETE	1	PC.
83		419008-7	FIX GUIDE	2	PC.
84		423345-3	CUSHION PLATE	1	PC.
85		324801-5	CRANK SHAFT	1	PC.
86		211279-0	BALL BEARING 6303LLU	1	PC.
87		961057-5	RETAINING RING S-17	1	PC.
88		254220-0	KEY 5	2	PC.
89		227181-7	SPUR GEAR 19	1	PC.
90		226655-5	HELICAL GEAR 36	1	PC.
91		961054-1	RETAINING RING S-14	1	PC.
92		253180-3	FLAT WASHER 10	1	PC.
93		125415-1	TORQUE LIMITER ASS'Y	1	PC.
98		424033-5	SEAL RING	1	PC.
99		158299-2	GEAR HOUSING COMPLETE	1	PC.
100		419796-6	HANDLE COVER	1	PC.
101		265995-6	TAPPING SCREW 4X18	1	PC.
102	1	650567-4	SWITCH TG73B-1	1	PC.
	2	650676-9	SWITCH C3PA-1111	1	PC.
103		154626-1	SWITCH HOLDER COMPLETE	1	PC.
104		419028-1	SWITCH LEVER	1	PC.
107		266041-8	TAPPING SCREW 5X25	6	PC.
108		450040-2	HANDLE	1	PC.
111		864092-1	HR4510C NAME PLATE	1	PC.
117		450036-3	CRANK HOUSING COVER	1	PC.
118		631750-2	CONTROLLER	1	PC.
119	1	266192-7	* TAPPING SCREW 4X14	1	PC.
	2	266901-4	* TAPPING SCREW 4X14	1	PC.
120		638510-3	LEAD UNIT	1	PC.
121		687169-3	STRAIN RELIEF	1	PC.
122		266192-7	TAPPING SCREW 4X14	1	PC.
123		419024-9	CORD CLAMP BASE	1	PC.
124		265995-6	TAPPING SCREW 4X18	4	PC.
125	1	266192-7	* TAPPING SCREW 4X14	1	PC.
	2	266901-4	* TAPPING SCREW 4X14	1	PC.

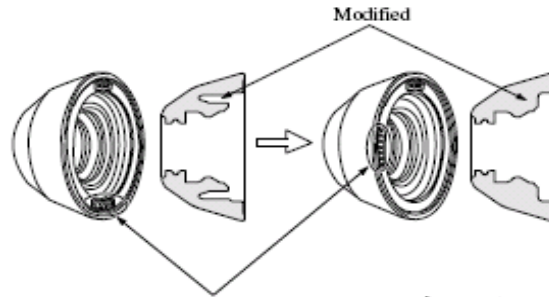
Item No.	Type	Sub	Part No.	Description	Qty	Unit
126			419774-6	LENS	1	PC.
127			682560-0	CORD GUARD 10	1	PC.
128			664471-1	CORD W/PLUG 2P,14-5.0M	1	PC.
129			266041-8	TAPPING SCREW 5X25	2	PC.
130			450035-5	REAR COVER	1	PC.
131			252178-7	HEX. NUT M8-12	1	PC.
132			253165-9	FLAT WASHER 8	1	PC.
133			240016-5	FAN 90	1	PC.
134			419782-7	FAN GUIDE	1	PC.
135		3	195845-0	CARBON BRUSH CB-175 2PC/SET (W/ ORIGIN)	1	SET
136		1	638447-4	* BRUSH HOLDER UNIT	1	PC.
		2	632D00-2	* BRUSH HOLDER UNIT	1	PC.
137			450041-0	MOTOR HOUSING	1	PC.
138			636311-3	FIELD 115V	1	PC.
139			266046-8	TAPPING SCREW 5X50	2	PC.
140			210059-1	BALL BEARING 6000DDW	1	PC.
141			681642-5	INSULATION WASHER	1	PC.
142			517766-0	ARMATURE ASS'Y 115V	1	PC.
		INC.		Item No. 140, 141, 145		
143			267025-9	FLAT WASHER 15	1	PC.
144			211238-4	BALL BEARING 6202LLU	1	PC.
145			331596-3	SLEEVE 12	1	PC.
146			213231-4	OIL SEAL 15	1	PC.
147			450033-9	BAFFLE PLATE	1	PC.
148			266192-7	TAPPING SCREW 4X14	1	PC.
149			419786-9	SWITCH BOX	1	PC.
150			263027-3	RUBBER PIN 4	1	PC.
151			651418-4	SWITCH ST115A-40	1	PC.
152			232209-8	LEAF SPRING	1	PC.
153			154635-0	SLIDE LEVER COMPLETE	1	PC.
154			450042-8	CONTROL PLATE	1	PC.
155			331840-8	* SHOULDER SLEEVE 19 (Added)	1	PC.
200			265701-9	SCREW M6X14 (F/GRIP ASSY)	1	PC.
201			266163-4	CUP SQUARE NECK BOLT M8X80 (F/SIDE HANDLE 68 ASSY)	1	PC.
202			344491-8	GRIP SPRING 68 (F/SIDE HANDLE 68 ASSY)	1	PC.
203			344492-6	PLATE (F/SIDE HANDLE 68 ASSY)	1	PC.
204			416299-1	SIDE GRIP BASE 68 (F/SIDE HANDLE 68 ASSY)	1	PC.
205			931302-2	HEX. NUT M6 (F/SIDE HANDLE 68 ASSY)	1	PC.
ACCESSORIES				- See catalogue or visit www.makita.ca for optional accessory -		
A01			158131-0	GRIP 36 COMPLETE (F/HR4510C)	1	PC.
A01A			123138-5	GRIP ASSEMBLY (F/HR4510CV)	1	PC.
		INC.	158131-0	GRIP 36 COM. (Item No. A01)	1	PC.
		INC.	234226-4	COMPRESSION SPRING 6	1	PC.
		INC.	266163-4	CSN BOLT M8X80	1	PC.
		INC.	313223-4	RACK GUIDE	1	PC.
		INC.	344492-6	PLATE	1	PC.
		INC.	346535-0	GRIP SPRING 73	1	PC.
		INC.	453114-8	LOCK BUTTON	1	PC.
		INC.	453119-8	SIDE GRIP BASE 73	1	PC.
A02		1	158275-6	PLASTIC CARRYING CASE COM (F/HR4510C)	1	PC.
		INC.	163467-4	LATCH	2	PC.
		INC.	816880-2	INDICATION LABEL	1	PC.
		4	196187-5	PLASTIC CARRYING CASE	1	PC.
		INC.	892399-5	INDICATION LABEL (Same as 816880-2)	1	PC.
		INC.	----	INNER TRAY - N/A as individually	1	PC.
A02A			196191-4	PLASTIC CARRYING CASE (F/HR4510CV)	1	PC.
		INC.	892399-5	INDICATION LABEL	1	PC.
A03		1	181573-3	GREASE VESSEL 93G	1	PC.
		1 INC.	817105-7	CAUTION LABEL	1	PC.
		2	194683-7	GREASE VESSEL SET, 100CC, PUMP TYPE, FOR BIT	1	PC.
		2 INC.	817105-7	CAUTION LABEL	1	PC.

Item No.	Type	Sub	Part No.	Description	Qty	Unit
A04			134890-0	SIDE HANDLE 68 ASS'Y, D-STYLE (F/HR4510C)	1	PC.
		INC.	151769-0	SIDE HANDLE BASE 68 COMPLETE	1	PC.
		INC.	252640-2	WING NUT M8	1	PC.
		INC.	265439-6	HEX. BOLT M8X150	1	PC.
		INC.	417002-3	SIDE HANDLE CAM	2	PC.
		INC.	417003-1	SIDE HANDLE	1	PC.
A04A			135531-1	SIDE HANDLE 73 ASS'Y, D-STYLE (F/HR4510CV)	1	PC.
		INC.	141519-1	SIDE HANDLE BASE 73 COMPLETE	1	PC.
		INC.	252640-2	WING NUT M8	1	PC.
		INC.	265439-6	HEX. BOLT M8X150	1	PC.
		INC.	417002-3	SIDE HANDLE CAM	2	PC.
		INC.	417003-1	SIDE HANDLE	1	PC.
A05			443122-7	CLOTH	1	PC.
A06A			123066-4	DEPTH GAUGE B ASSEMBLY (F/HR4510CV)	1	PC.
A07A			162332-4	DUST COVER COMPLETE (F/HR4510CV)	1	PC.
A08			321248-4	DEPTH GAUGE (F/HR4510C)	1	PC.
A08A			331955-1	DEPTH GAUGE (F/HR4510CV)	1	PC.
A09A			424472-9	DUST COVER CAP (F/HR4510CV)	2	PC.
A10A			444034-7	FIXED BAND (F/HR4510CV)	1	PC.
A11A	1		453115-6	JOINT (F/HR4510CV)	2	PC.
	2		455810-4	JOINT (F/HR4510CV)	2	PC.
A12A			453118-0	BELLOWS (F/HR4510CV)	2	PC.
A14A			453674-0	JOINT 25 (F/HR4510CV)	1	PC.
A15A			453710-2	SPACER (F/ fitting Dust Extractor Attachment) (F/HR4511CV)	1	PC.
A16A			196074-8	SDS-MAX DUST EXTRACTION ATTACHMENT (F/HR4510CV) (See Parts Breakdown 196074-8)	1	PC.
		INC.		Item No. A01A, A06A - A12A, A14A		
A17	1		188581-5	HAMMER SERVICE KIT SET	1	SET
	2		195210-3	HAMMER SERVICE KIT SET	1	SET
		INC.	A-90582	MAKITA GREASE R NO.00, 30G, 10OZ (HAMMER GREASE)	1	PC.
		INC.	195845-0	CARBON BRUSH SET CB-175 2PC/SET W/ORIGIN)	1	SET
		INC.	213394-6	O RING 23	1	PC.
		INC.	213431-6	FLUORIDE RING 28	1	PC.
		INC.	213980-3	X RING 21	1	PC.
		INC.	213981-1	O RING 27	1	PC.
		INC.	286285-4	TOOL HOLDER CAP	1	PC.
A18			135209-6	GRIP 36 ASS'Y (STRAIGHT) (HR4510C)	1	PC.
		INC.	265701-9	SCREW M6X14	1	PC.
		INC.	266163-4	CUP SQUARE NECK BOLT M8X80	1	PC.
		INC.	158131-0	GRIP 36 COMPLETE	1	PC.
		INC.	931302-2	HEX. NUT M6	1	PC.
		INC.	416299-1	SIDE GRIP BASE 68	1	PC.
		INC.	344492-6	PLATE	1	PC.
		INC.	344491-8	GRIP SPRING 68	1	PC.
		INC.	321248-4	DEPTH GAUGE	1	PC.
A19			196571-4	DUST EXTRACTOR ATTACHMENT SET	1	PC.
		INC.	142350-8	HOSE COMPLETE 28 - 1.5	1	PC.
		INC. TP1	417765-1	FRONT CUFF 22	1	PC.
		INC. TP2	195547-8	FRONT CUFF 22	1	PC.
		INC. TP1	417766-9	FRONT CUFF 38	1	PC.
		INC. TP2	195545-2	FRONT CUFF 38	1	PC.
		INC.	415021-3	HOSE JOINT	1	PC.
		INC.	454749-8	HOSE HOLDER A	1	PC.
		INC.	454750-3	HOSE HOLDER B	1	PC.
		INC.	454809-6	HOSE HOLDER C	1	PC.
		INC.	-----	PLASTIC CASE LABEL (N/A Individually)	1	PC.
		INC.	-----	CARTON (Master) (N/A Individually)	1	PC.
		INC.	-----	Instruction Manual 30Language (N/A Individually)	1	PC.

SERVICE CHANGES

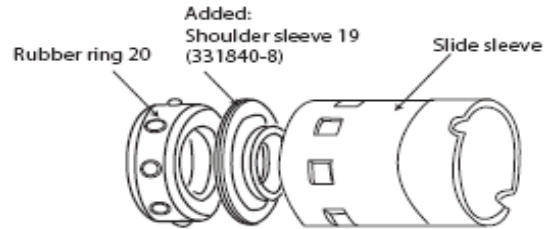
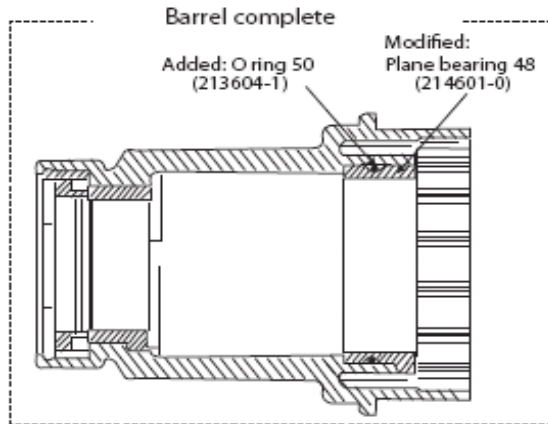
1. Changes on Tool Holder

Item No.	Description	Type 1	Type 2
1	TOOL HOLDER CAP	286272-3	286285-4



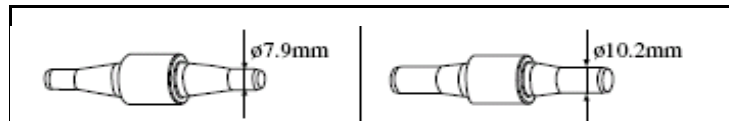
2. Changes on Barrel Complete, etc.

Item No.	Description	Type 1	Type 2
16	BARREL COMPLETE	158576-2 (Part No. remains the same)	
16	O ring 50 (Component of Barrel Com.)	-----	213604-1
155	SHOULDER SLEEVE	-----	331840-8



3. Changes on Counter Weight

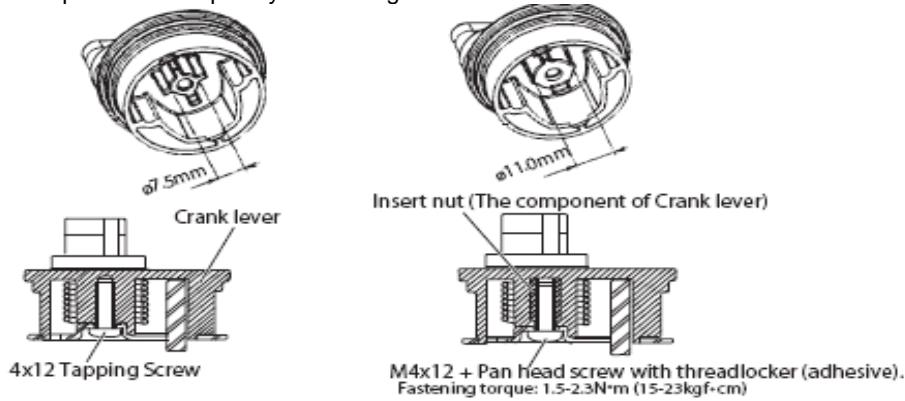
Item No.	Description	Type 1	Type 2
58	COUNTER WEIGHT	324806-5 (Part No. remains the same)	



4. Changes on Crank Lever, Tapping Screw

Item No.	Description	Type 1	Type 2
71	CRANK LEVER	419784-3	450687-2
78	TAPPING SCREW	266020-6	265014-8

Above parts are completely interchangeable as a set.



5. Changes on Tapping Screws

(TI# A2782)

Item No.	Description	Type 1	Type 2
119	TAPPING SCREW 4X14	266192-7	266901-4
125	TAPPING SCREW 4X14	266192-7	266901-4

Type 1

Type 2



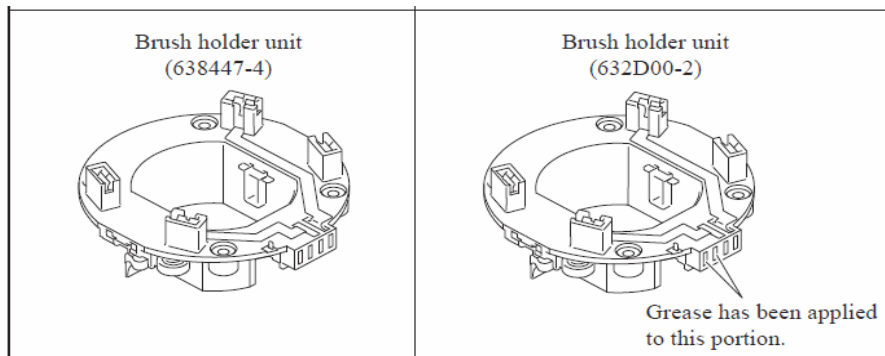
6. Changes on Brush Holder Unit

(TI#A4072)

Item No.	Description	Type 1	Type 2
136	BRUSH HOLDER UNIT	638447-4	632D00-2

Type 1

Type 2



7. Changes on Crank cap

(TI#AA4417)

Item No.	Description	Type 1	Type 2
76	CRANK CAP	450034-7	455525-3

Type 1

Type 2

